

11063 Hartwell Site

Newbridge Road, Bath

April 2019

NPA 11063 101 P01 Landscape Strategy
On behalf of London Road Nottingham

REPORT COMPILED BY NICHOLAS PEARSON ASSOCIATES.

ISSUE P01. 1ST APRIL 2019.
FOR PLANNING.

NICHOLAS PEARSON ASSOCIATES
ENVIRONMENTAL PLANNERS • LANDSCAPE ARCHITECTS • ECOLOGISTS

NICHOLAS PEARSON ASSOCIATES
LANDSCAPE ARCHITECT, ECOLOGIST & EIA

The Farm House
Church Farm Business Park
Corston, Bath
BA2 9AP

info@npaconsult.co.uk

01225 876990

CONTENTS

1.0	LANDSCAPE TYPOLOGIES	2
2.0	LANDSCAPE GENERAL ARRANGEMENT PLAN	5
3.0	LANDSCAPE CONCEPT IMAGES	7
	Courtyard concept images	8
	Soft landscape example images	9
	Hard landscape example images	10

I.0 Landscape Typologies

PROPOSED LANDSCAPE TYPOLOGIES - PLAN



INTRODUCTION

The overall landscape design strategy takes a holistic approach to the site. The design strategy is informed by:

- Landscape appraisal of site and context.
- Ecology survey and recommendations for biodiversity enhancements;
- Arboricultural assessment;
- Below ground conditions; former quarry floor/ wall, and services (sewer along former railway line);
- Historic use of the site as a quarry with former railway line passing through;
- Drainage strategy;
- Requirements and opportunities for site access and circulation for pedestrians, cyclists and vehicles.

DESIGN PRINCIPLES

- High quality landscape design responding to the context.
- Careful accommodation of required access and circulation through site – especially key public route and sustainable transport route.
- Retention of as many trees within the site as possible, especially higher quality (BS.5837 Cat. B).
- Provision of elements of green infrastructure as an integral part of the development, including with respect to enhancements to habitats – especially habitat corridor.
- Provide a strong landscape/ external realm theme to provide good legibility through site.
- Reference to previous site use as a quarry and alignment of railway line, eg. Opportunity for interpretation.
- Use of above ground planters to avoid poor below ground soil/ growing conditions eg. former quarry 'floor'.
- High quality lighting of public realm, with sensitive approach to key ecological assets.

KEY

- | | | | |
|---|---|--------------------------------------|-------------------------|
| A Car Park (accessed from / fronting Newbridge Road) | C Courtyards | F Sustainable Transport Route | Shared cycle / footpath |
| Ba Bin store surrounds | D Newbridge Road frontage | Vehicle access | Key pedestrian route |
| Bb Service area | E Vehicular access route and car parking areas | Service access | |

PROPOSED LANDSCAPE TYPOLOGIES - DESCRIPTION

A CAR PARK (ACCESSED FROM / FRONTING NEWBRIDGE ROAD)

- Retained car park;
- Removal of disused built form;
- Reconfiguration of parking spaces;

B SERVICE AREA AND BIN STORE SURROUNDS

- Located at southern boundary adjacent to, with access from The Maltings Industrial Estate to minimise requirement for service vehicles to access rest of site;
- Minimised area to facilitate safe turning;
- Accommodates limited area of parking, avoiding/ minimising impact to existing mature tree;
- Adjacent soft landscape to comprise native species, where space is available;
- Proposed paving materials to include asphalt surfacing.;
- Proposed tree/ shrub species to include Hazel; Hawthorn; Blackthorn; Field maple; Rowan; Crab apple; Wild Cherry; Oak; Hornbeam.

C COURTYARDS

- High quality group of linked courtyards with strong unifying theme and design;
- Strongly featured and bold paving design/ pattern;
- Strongly defined key pedestrian routes;
- Use of raised planters as key features/ elements, incorporating seating and soft landscape;
- High quality lighting proposals;
- Accommodation of required emergency access;
- Proposed paving materials;
- High quality pre cast concrete block paving including elements of/ with strong contrast;
- Proposed tree/ shrub species to include Himalayan birch; ornamental cherry; Hebe; Geranium; Rosemary; Lavender; Honeysuckle; Flowering currant; Lilac; Mexican orange blossom.

D NEWBRIDGE ROAD FRONTAGE

- Creation of a high quality public realm frontage;
- Increased area/ width of pavement to frontage of new build;
- Defined/ delineated paved area at entrance to key pedestrian access through the site;
- Inclusion of delineated crossing point at vehicular site access points;
- Introduction of new bus shelter;
- Retention of some existing trees along frontage;
- Proposed tree planting within existing soft landscape and within raised planters at western end of frontage, to soften streetscape;
- Raised planter to include evergreen shrubs to provide some local concealment of parking;
- Proposed paving materials to include high quality pre-cast concrete block paving (unadopted areas);
- Proposed tree/ shrub species to include white beam, sweet box, hebe, cherry laurel 'Otto Luyken'; pieris; spindle.

E VEHICULAR ACCESS ROUTE AND CAR PARKING AREAS

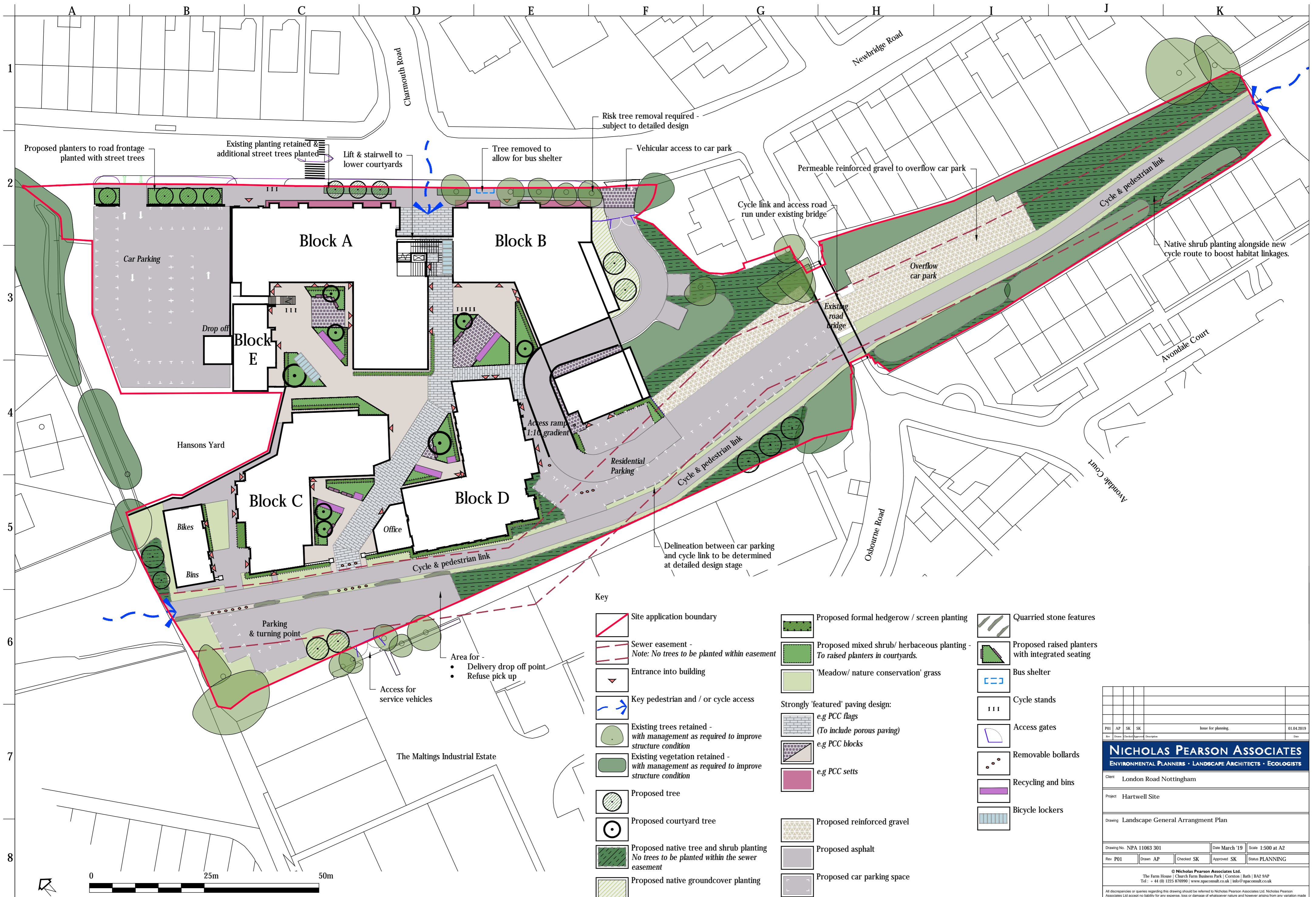
- Provision of required (new) vehicular access from Newbridge Road;
- Route utilises (in part) existing route, with ramp down from Newbridge Road to lower part of site;
- Route design/ alignment minimises vegetation removal;
- Soft landscape treatment adjacent to access route to comprise predominantly native species;
- Very carefully considered, ecologically sensitive and minimised lighting, especially along former line of railway;
- Proposed paving materials to include asphalt;
- Proposed tree/ shrub species to include Hazel; Hawthorn; Blackthorn; Field maple; Rowan; Crab apple; Wild Cherry; Oak; Hornbeam.

F SUSTAINABLE TRANSPORT ROUTE

- Provision of required (new) vehicular access from Newbridge Road;
- Route utilises (in part) existing route, with ramp down from Newbridge Road to lower part of site;
- Route design/ alignment minimises vegetation removal;
- Soft landscape treatment adjacent to access route to comprise predominantly native species;
- Very carefully considered, ecologically sensitive and minimised lighting, especially along former line of railway;
- Proposed paving materials to include asphalt;
- Proposed tree/ shrub species to include Hazel; Hawthorn; Blackthorn; Field maple; Rowan; Crab apple; Wild Cherry; Oak; Hornbeam.

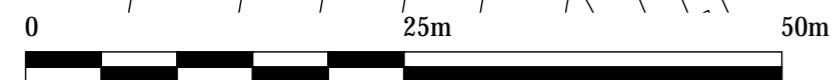
2.0 Landscape General Arrangement Plan

NPA 11063 301 (1:500 at A2)



Key

- Site application boundary
- Sewer easement - Note: No trees to be planted within easement
- Entrance into building
- Key pedestrian and / or cycle access
- Existing trees retained - with management as required to improve structure condition
- Existing vegetation retained - with management as required to improve structure condition
- Proposed tree
- Proposed courtyard tree
- Proposed native tree and shrub planting No trees to be planted within the sewer easement
- Proposed native groundcover planting
- Proposed formal hedgerow / screen planting
- Proposed mixed shrub/ herbaceous planting - To raised planters in courtyards.
- 'Meadow/ nature conservation' grass
- Strongly 'featured' paving design: e.g PCC flags (To include porous paving) e.g PCC blocks e.g PCC setts
- Proposed reinforced gravel
- Proposed asphalt
- Proposed car parking space
- Quarried stone features
- Proposed raised planters with integrated seating
- Bus shelter
- Cycle stands
- Access gates
- Removable bollards
- Recycling and bins
- Bicycle lockers



Rev	Drawn	Checked	Approved	Status
P01	AP	SK	SK	PLANNING

Issue for planning: 01.04.2019

NICHOLAS PEARSON ASSOCIATES
ENVIRONMENTAL PLANNERS • LANDSCAPE ARCHITECTS • ECOLOGISTS

Client: London Road Nottingham
Project: Hartwell Site
Drawing: Landscape General Arrangement Plan

Drawing No: NPA 11063 301 | Date: March '19 | Scale: 1:500 at A2

© Nicholas Pearson Associates Ltd.
The Farm House | Church Farm Business Park | Corston | Bath | BA2 9AP
Tel: + 44 (0) 1225 876990 | www.npaconsult.co.uk | info@npaconsult.co.uk

All discrepancies or queries regarding this drawing should be referred to Nicholas Pearson Associates Ltd. Nicholas Pearson Associates Ltd accept no liability for any expense, loss or damage of whatsoever nature and however arising from any variation made to this drawing or in the execution of the work to which it relates which has not been referred to them and their approval obtained.

Dep Ref: N:\Projects\11063 LRN\Work\300 General Arrangement\NPA 11063 301 Hartwell GA.dwg

Reproduced from the Ordnance Survey's map with the permission of the Controller of The Stationery Office. © Crown Copyright. Licence No. 100018702

3.0 Landscape Concept Images

COURTYARD CONCEPT IMAGES



© Frank Hanswijk

Raised planter to courtyards



© Landezine

Communal seating areas integrated into planters



© Herve Abbadie

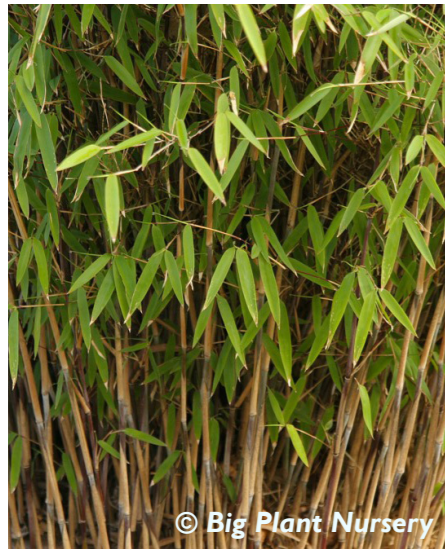
Resting spot integrated into planters



© HTA Landscape

Tree planted within raised planter

SOFT LANDSCAPE EXAMPLE IMAGES



© Big Plant Nursery

Screening to private residences



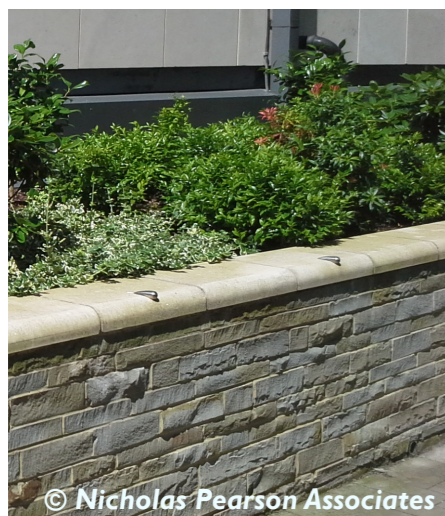
© Nicholas Pearson Associates

Planting for nature conservation



© Iota

Seasonal interest to raised planters



© Nicholas Pearson Associates

Evergreen shrubs to Newbridge Road frontage



© Chalet nursery

Multi-stem trees

PLANTING STRATEGY

- Use of a variety of species to provide varied structure, form and interest through the site;
- Overall selection to provide biodiversity value and interest (form, structure, colour, scent) through the year, especially within courtyards;
- Native species selection based upon biodiversity recommendations, and appropriate for local conditions (calcareous soils);
- Soft landscape at site boundaries, where possible, to provide local softening, visual amenity and nature conservation value;
- Where possible, within development parameters, native planting is proposed to provide an enhanced, linear corridor through the site for bats;
- Sewer and easement; no tree planting within easement, shrub planting only.

HARD LANDSCAPE EXAMPLE IMAGES



Concrete blocks to wider courtyards



Concrete 'cobbles' to private outdoor spaces



Concrete blocks to communal seating areas



Permeable flags to key pedestrian route



Example permeable reinforced gravel



Stone features act as bollards



Stone features act as bollards